



ROBINSON
MARSH



001 Gorsuch Place, London, E2 8GY
£4,499 Per Month

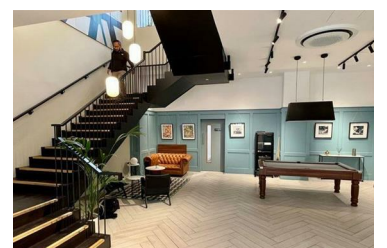
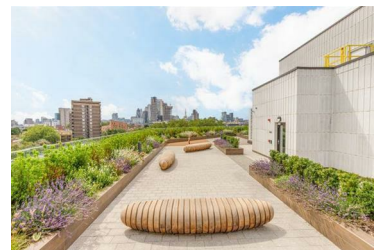


Stunning 3-bedroom flat in the Rosewood Building on Shoreditch Exchange.

ENQUIRE FOR PHOTOS - AVAILABLE!

The rent includes access to a variety of convenient amenities like concierge service, a communal roof garden with amazing city views, an indoor 16-seat cinema, a members lounge, an on-site gym, a bike storage facility, private courtyards, and a pet license for £150 + VAT (one-off).

This air-conditioned flat is beautifully bright with large windows and high ceilings. It comes with a well-equipped open-plan kitchen, 2 bathrooms, wood floors, and a private balcony that holds a great view.



- Double Bedrooms
- Garden
- Balcony/Terrace
- Concierge
- Bathrooms
- Gas Central Heating
- Parking
- Close to Transport